

A still life composition featuring a stack of books, a reflective sphere, and a desk lamp. The stack consists of three books with green, red, and silver covers. A polished, reflective sphere sits on top of the green book, reflecting the surrounding environment. To the right, a portion of a desk lamp with a silver pole and a grey fabric shade is visible. The background is a dark, textured surface.

Montana

MONTANA FREE

MONTANA ACADEMY

Table of contents

A design to last

The designer

Product details

Colours & materials

Panels

Technical info

Measurements

Components for Free

Load capacity

Care instructions

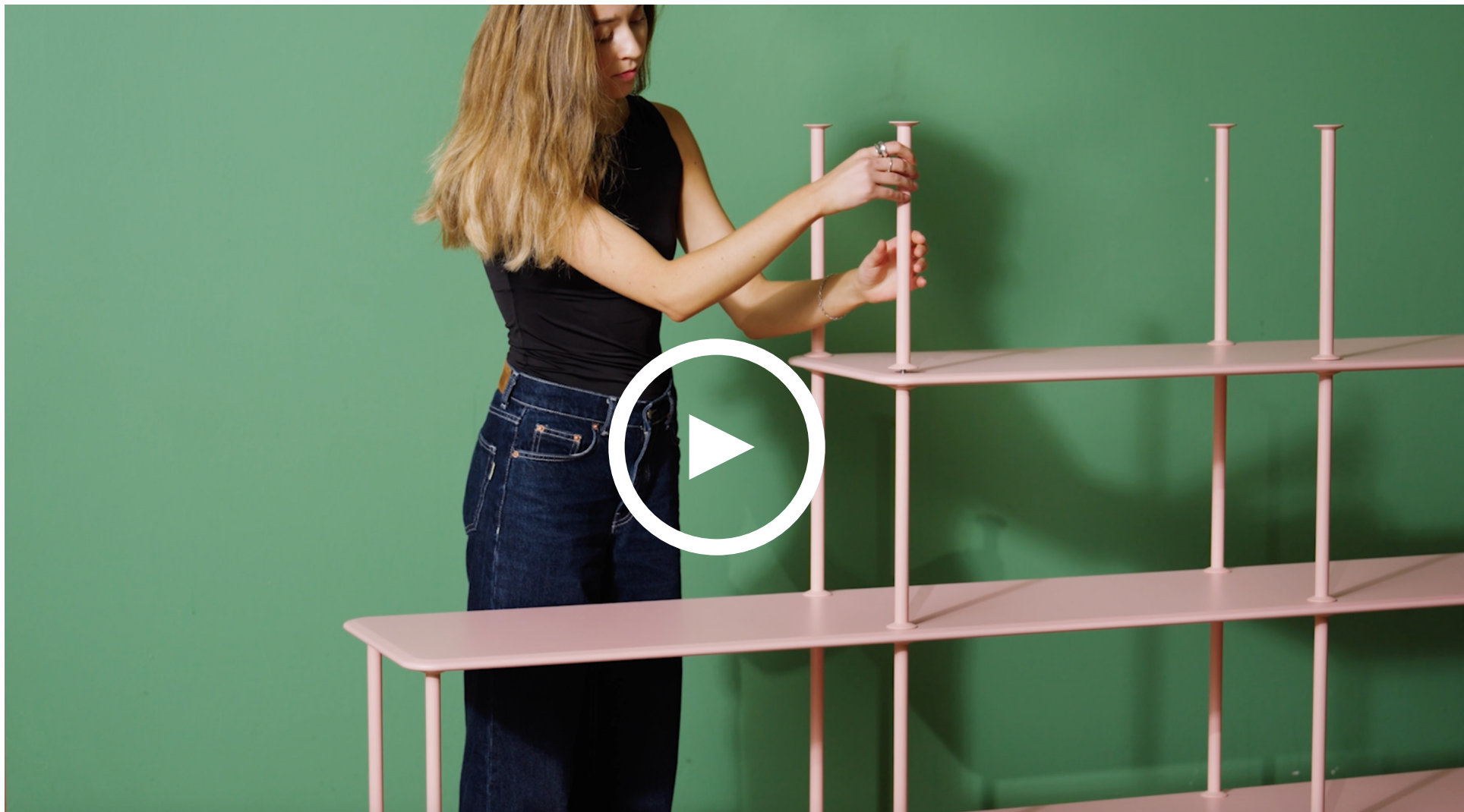
Unique selling points

A design to last

The Montana Free shelving system is furniture for a new way of living. Freestanding, easy to assemble, and irresistibly mobile.

The shelving system has all the hallmarks of Montana's unique DNA and the high quality you would expect.





MONTANA FREE

Get ready to free your personality

The Designer

“Good design is not about creating something nice – on the contrary it is about taking away all unnecessary parts to reveal the essential quality, form and function in an object.”

- Jakob Wagner

Jakob Wagner (b. 1963) is a Danish, award-winning designer. Wagner holds a BSc in Design Engineering from the Technical University of Denmark and a degree in Product Design from ArtCenter College of Design in Switzerland.

Wagner's designs have been exhibited around the world, and he has received several awards: six iF Awards, three Red Dot Awards, and Designer of the Year.



Product details

The Montana Free shelving system consists of 18 standard compositions. Supplied with a range of loose components, you can, however, create exactly the Free you want. Optional textile panels allow you to play with colours and expressions, create personalised screens between rooms, and alter the transparency of the shelving as desired. The Montana Free shelving system consists of structured lacquered MDF shelves with a depth of 38 cm, divided by either powder-coated or chrome plated tubes emphasising the horizontal shelves.

The shelves are 16 mm thick, and the tubes measure 1.8 cm in diameter.



	73.4 cm	138.4 cm	203.4 cm	203.4 cm	203.4 cm
41.7 cm			NEW 111010		
64.4 cm			NEW 111222	NEW 111220	
75.8 cm 109.9 cm					NEW 312000
109.9 cm 144 cm	NEW 300000	NEW 330000	333000	NEW 321000	NEW 342000
178.1 cm					
212.2 cm					

MONTANA FREE
18 pre-configured designs



MONTANA FREE
Montana Free in various configurations



MONTANA FREE

Montaan Free can also be assembled freely with loose components

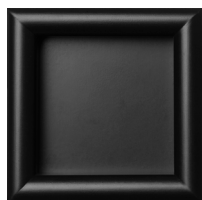
Colours & materials

The Montana Free is available in 8 vibrant colours. They can be used monochromatically or in combinations to create exactly the Free you want. From fall 2024, the tubes will also be available in chrome.

All shelves in the Montana Free range are delivered with a structured lacquered surface.

The Free panels feature the Mads Nørgaard Stripe and Reflect textiles, both from Kvadrat.





Black



New White



Fjord



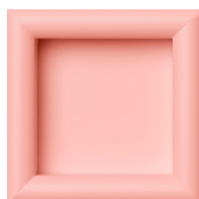
Parsley



Fennel



Masala



Ruby



Acacia



Chrome
*Only for tubes & feet

MONTANA FREE COLOURS

New colours in 2024 - All colours are delivered with structure lacquer

Panels

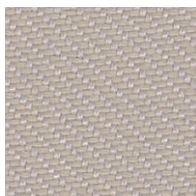
To customise your Free and experiment with its expression, panels are available in Kvadrat textiles in selected colours. The panels can be used as room-dividing screens or to stow away electronic items.

The panel is moulded in plastic with holes in the surface to transmit WiFi or Bluetooth signals when needed. The panel is covered in textile and clicks smoothly between the tubes.

Panels can be configured however you like in Design Pro.

Textiles available for panels: Mads Nørgaard Stripe and Reflect, both from Kvadrat.

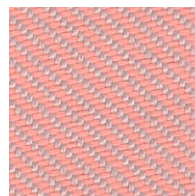




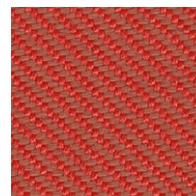
204
Reflect



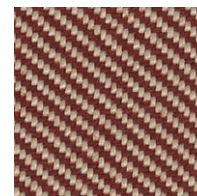
404
Reflect



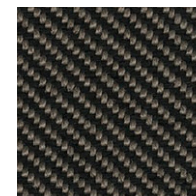
614
Reflect



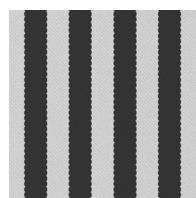
564
Reflect



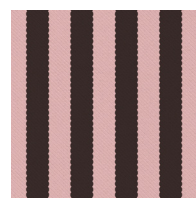
344
Reflect



184
Reflect



1123
MN



1629
MN

MONTANA FREE PANELS
Reflect and Mads Nørgaard Textiles

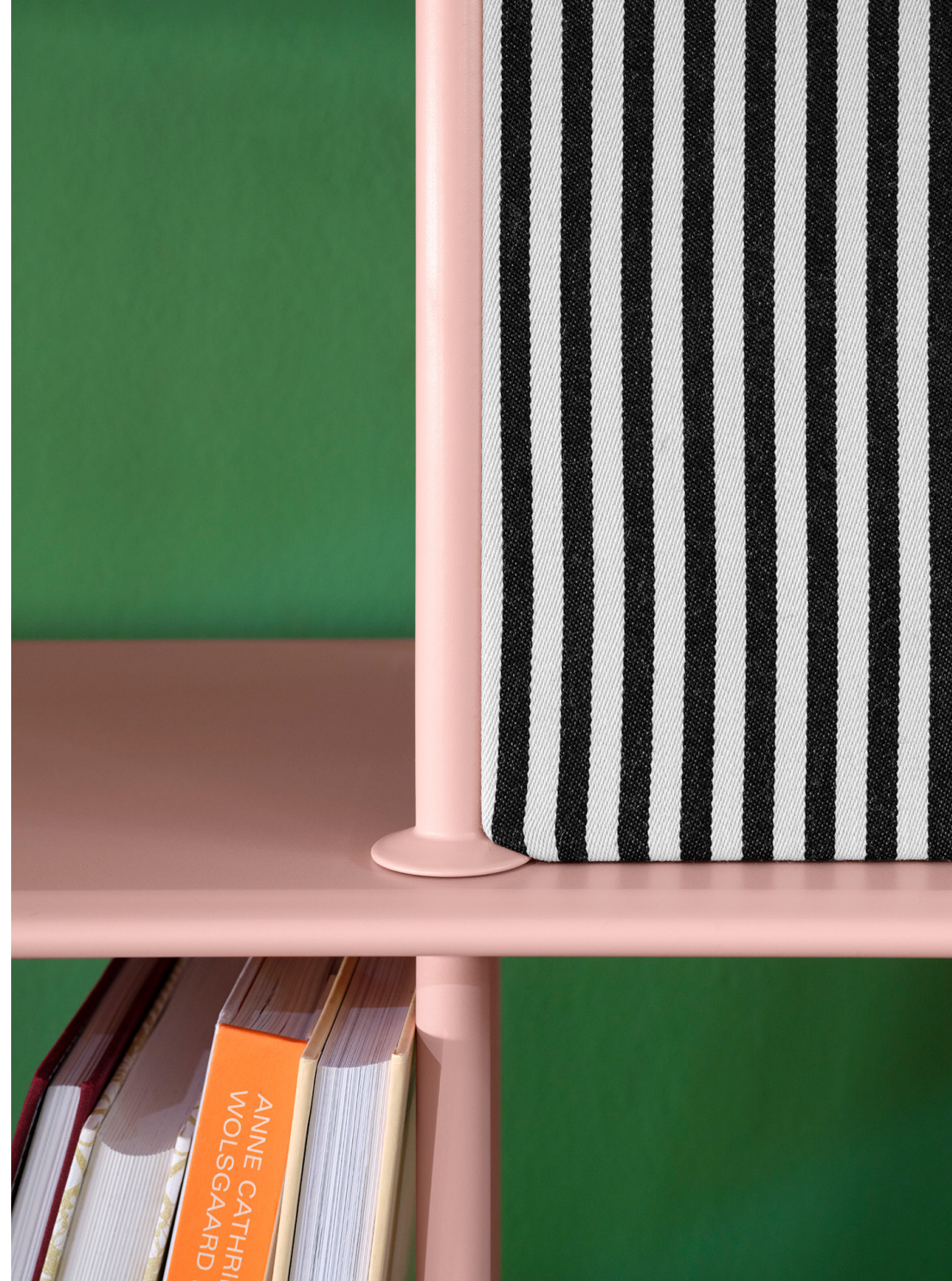


MONTANA FREE
Montana Free with Nørgaard textile panels

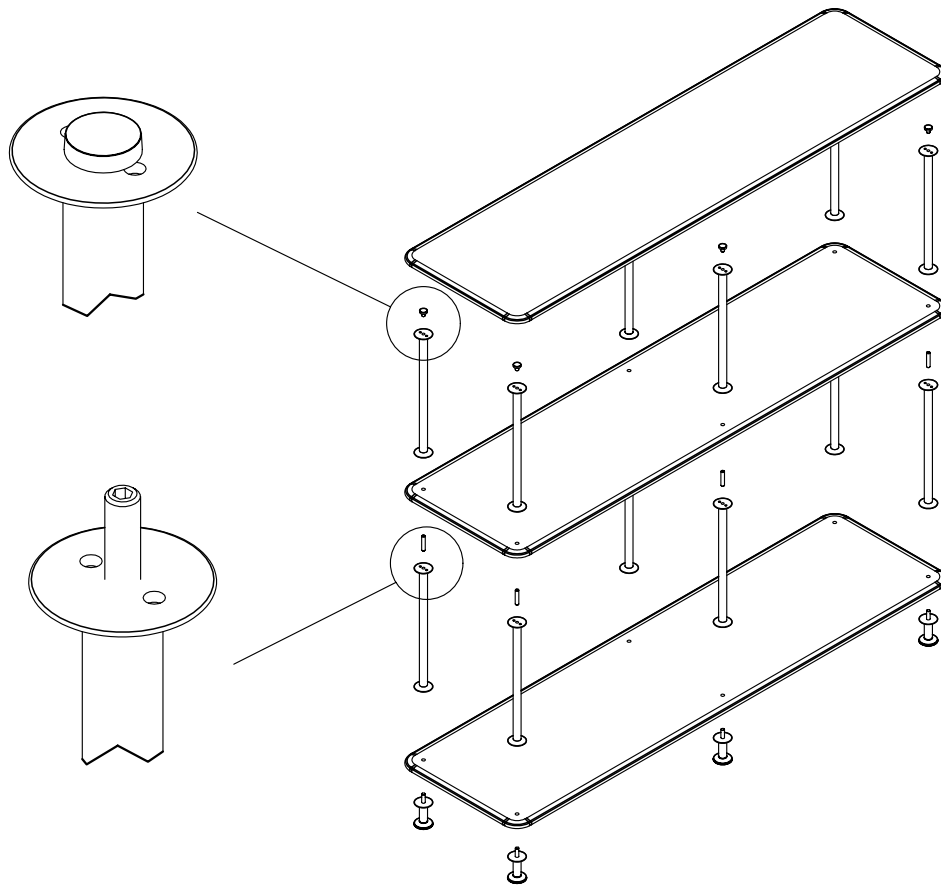
Technical information

Montana Free is delivered flat-packed and is fast and easy to assemble without the use of tools. The shelves and the tubes are fastened with pointed screws – the top plate is fastened by magnets.

Recommended maximum height: 212.2 cm (6 compartments height).



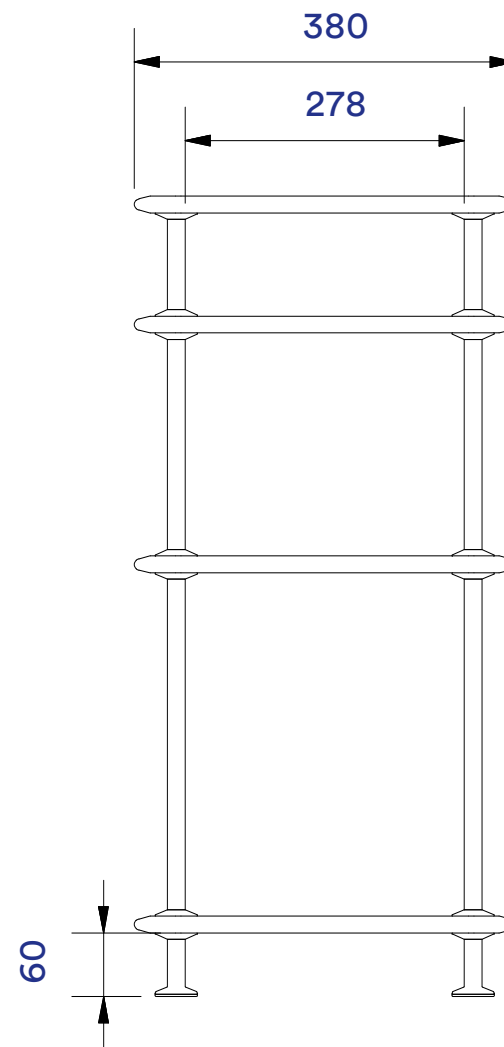
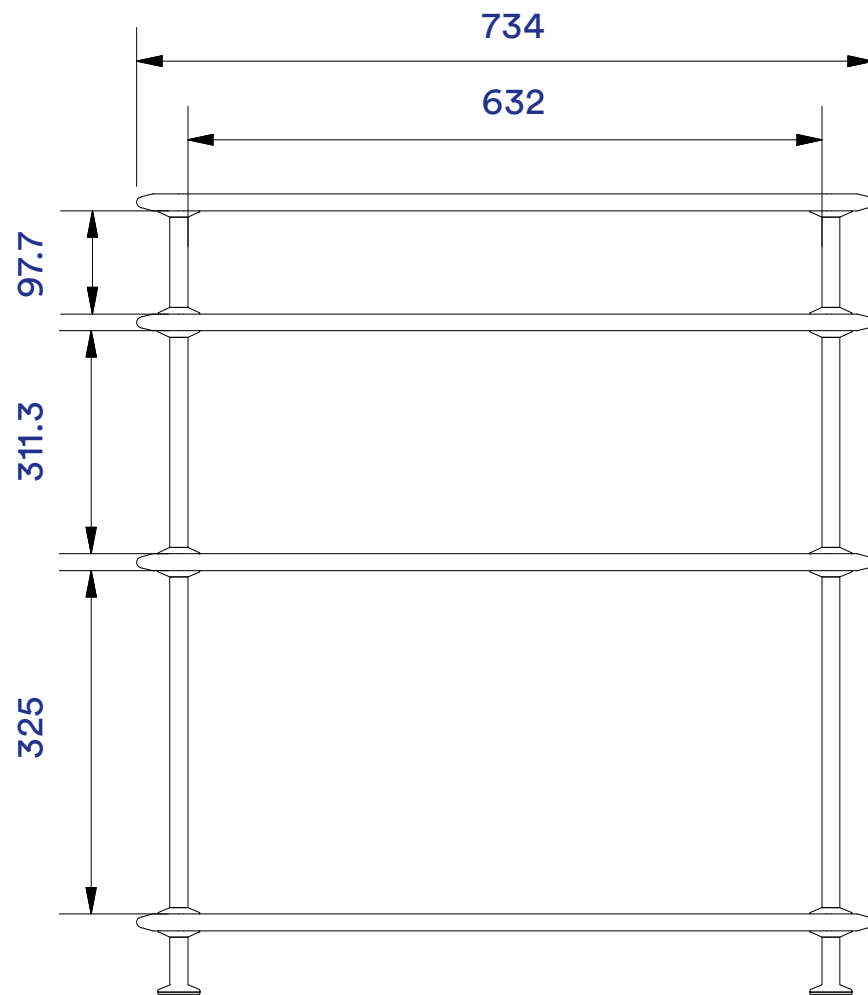
Assembly



When assembling one starts with the legs and a shelf then tubes. Leg and column assembled / screwed together with a shelf tightened between leg / column or column / column.

A shelving unit assembled from bottom / legs and built to the top / top shelf.

Top side of top shelf is smooth and without holes - the underside of it provided with pinned magnets that pulls the shelf down to the column which gives a nice finish to the shelving unit.



MONTANA FREE
Measurements & specs



Components for Free

Drawers for Montana Free can be purchased in all Free colours. The drawers are easily mounted underneath a shelf and are withdrawn from the shelf's fronts from both the back and the front.

Internal dimensions of drawers: W: 54 cm x D: 26 cm x H: 5.3 cm

Bookends are also available for Free in all colours. The bookend is installed by suspending it between two tubes and grabbing hold of the rounded shape of the tubes. The bookends are delivered as a set (2 pcs.).

Safety brackets for Montana Free are recommended from a height of 109.9 cm.



MONTANA FREE

Bookends can be purchased separately in all Free colours and is suspended in-between the tubes



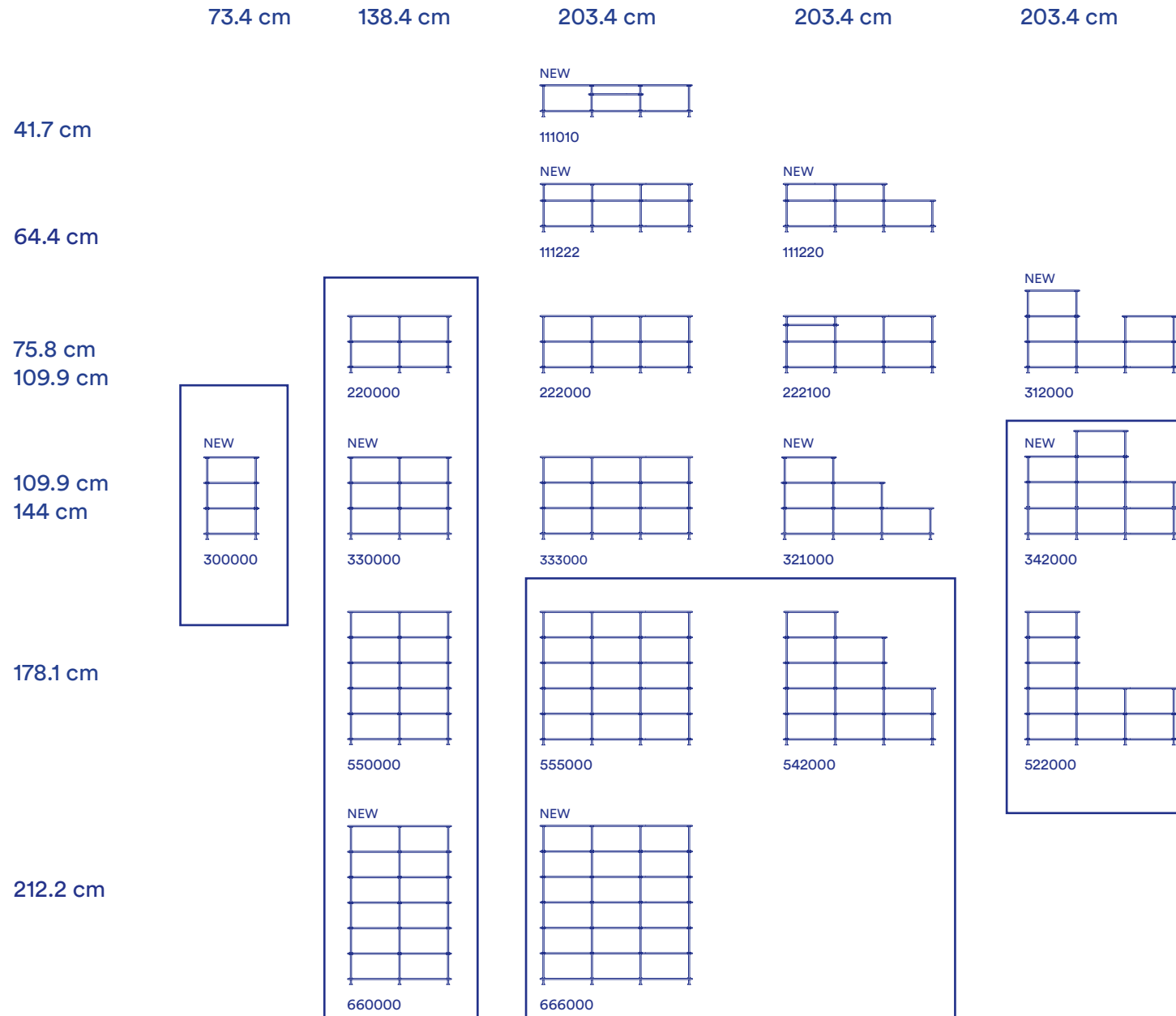
Safety bracket

A safety bracket is recommended for taller designs and in spaces with children and/or animals.

A safety bracket is included from the following configurations and taller:

- 1 row - W 73.4 cm x H 109.9 cm (4 shelves)
- 2 row - W 138.4 cm x H 75.8 cm (3 shelves)
- 3 row - W 203.4 cm x from H 144 cm (5 shelves)

Designs taller than 212.2 cm must be equipped with 2 safety brackets. Safety brackets are attached to the wall or ceiling and can also be purchased as loose components.



MONTANA FREE

Safety bracket is advised to use on the tall designs outlined - two safety brackets for a height of 212.2 cm



Montana Free

– how to attach a safety bracket for tall designs

MONTANA FREE

How to mount the Free safety bracket



Load capacity

Shelf width 73.4 cm max load 15 kg.

Shelf width 138.4 cm max load 30 kg.

Shelf width 203.4 cm max load 45 kg.

Compositions width 73.4 cm max load 40 kg.

Compositions width 138.4 cm max load 80 kg.

Compositions width 203.4 cm max load 120 kg.

All loads evenly distributed throughout the entire composition and assuming that the floor underneath the composition is stable and flat.

Remember to use safety bracket where recommended.

Care instructions

The surfaces are recommended to be vacuumed, cleaned with a clean dry cloth, or using a cloth wrung in soapy water and wiped dry immediately with a clean dry cloth. Never use ethyl alcohol, steel wool, scouring powder, or similar abrasive materials.

Please follow Kvadrat's care instructions for Montana Free panels.



Unique selling points

- Free standing
- Can be changed and redesigned
- Textile panel options
- Room division
- Entry from both sides
- Quick ship programme
- Easy to assemble
- High quality
- Scandinavian craftsmanship
- Environment-friendly
- Made in Denmark
- Timeless design





MONTANA FREE

Montana Free in Masala and bars in Chrome with an interposed shelf



MONTANA FREE

Montana Free model 666000* in Parsley with panels in Reflect and Nørgaard stripes and two drawers

EU Ecolabel

The EU Ecolabel is a label of environmental excellence. Recognised across Europe and worldwide.

Awarded to products that meet high environmental standards throughout their lifecycle. Less waste and less CO₂ during production. Durable, easy to repair and recyclable quality and design.

The EU Ecolabel provides exigent guidelines and offers third party controls and audits.



Always updated on..

Montana Backroom

Montana Website

Montana YouTube



Montana